

## Romeo and Juliet: 7th Grade Visual Literacy Unit Frame Analysis

Study the frame carefully. How does the filmmaker use visual devices to convey meaning in this frame?

In the boxes below, use bullet points to detail the film maker's use of four visual devices. SEE RUBRIC

You will then use this information to write a paragraph explaining how the filmmaker has used the devices to convey theme, mood, and/or conflict.

<p>Device 1: Symbolism ✓</p> <ul style="list-style-type: none"> <li>- Romeo and Juliet are on different sides of the fish tank symbolizing that they are separated</li> <li>- Romeo is wearing a knight costume giving the idea that he is going to "save the day"</li> <li>- Juliet is wearing an angel costume emphasizing her purity ✓</li> </ul> <p>Effect: This symbol affects the theme of love versus hate and how they are separated and discouraged even though it was love at first sight.</p>	<p>Device 2: Camera Angle ✓</p> <ul style="list-style-type: none"> <li>- The camera is shot from a perspective in which you could see Juliet's reflection (It shows two angles of her face and her smile)</li> <li>- It is a view where you see Romeo on the other side and the wall between them clearly</li> <li>- You see the chemistry between them as they look at each other ✓</li> </ul> <p>Effect: The camera angle affects the theme of how they are so close but yet so far apart and how their family feud has created a boundary between them.</p>
<p>Device 3: Lighting ✓</p> <ul style="list-style-type: none"> <li>- The water from the fish tank is reflecting onto Juliet and Romeo's face giving her a glow or innocence</li> <li>- The light is coming from the top right corner of the tank shining on the right side of Romeo and Juliet's face</li> <li>- The background is quite dim except for their costumes, faces, and the tank allowing them to shine and become the center of attention ✓</li> </ul> <p>Effect: The lighting in this scene affects the frame's mood because it gives them an innocent and pure definition and fixes our eyes on their faces since it is mostly shining on them ✓</p>	<p>Device 4: Rule of Thirds ✓</p> <ul style="list-style-type: none"> <li>- Romeo and Juliet are on the sides of the frame showing how their family are on different "sides"</li> <li>- The fish tank is in the middle separating them and creating a boundary</li> <li>- They are not united in the center due to their physical and mental separation ✓</li> </ul> <p>Effect: The rule of thirds affects the theme of this scene because it is showing again how if they were in the center, the world could be revolving around them. However, they are divided by their families constant feud and on different sides.</p>

Write a paragraph to explain how the filmmaker has used the devices above to convey theme, mood, and/or conflict.

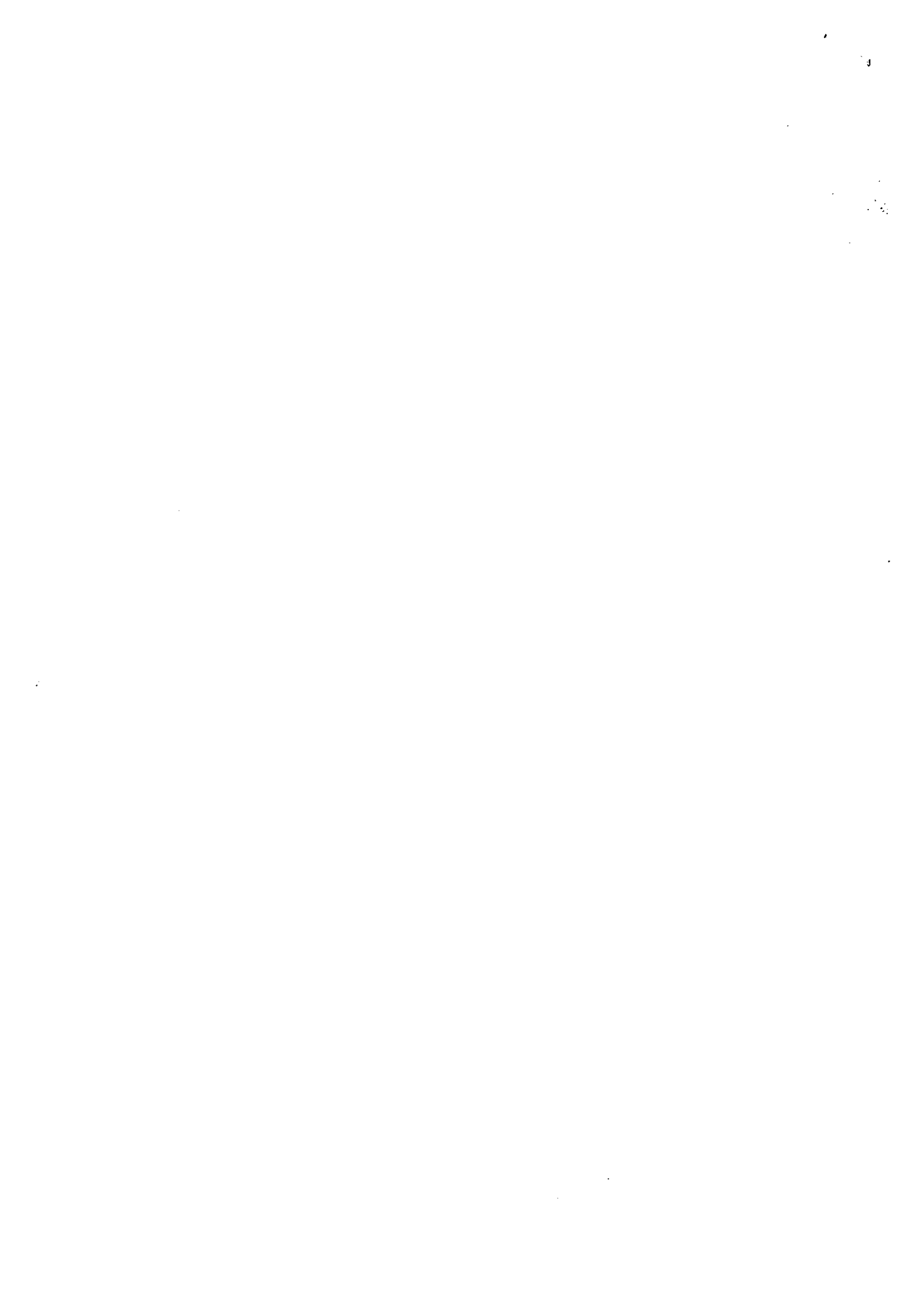
The director of *Romeo and Juliet* had included crucial visual devices like symbolism, camera angles, lighting, and the rule of thirds in his movie to highlight the film's mood and theme. In this frame Romeo and Juliet spot each other at the ball and have a "love at first sight" moment, but they are separated by a fish tank. This symbolizes that they are out of each other's reach, and divided. Romeo is also fitted in a knight costume symbolizing how he is going to "save the day", and Juliet is wearing an angel costume symbolizing how she is pure and innocent. This symbol affects the theme of love versus hate and how they are ~~separated~~, even though they were in love right when they saw each other. The camera's angle is shot from a perspective where you could see Juliet's reflection and Romeo and Juliet staring at each other. This evokes the theme in which they are ~~so~~ close but also so far apart and how they are surprised and entranced by each other. The lighting in this scene is from the layered light in the fish tank, that reflects onto Romeo and Juliet's face giving them a glow or innocence. The dim background allows their faces to shine and become the center of attention as well. This represents the frame's mood because it fixes our eyes on them. Finally, the rule of thirds is applied in this frame, because Romeo and Juliet are on two different sides of the scene, and the fish tank is in the center blocking them from interacting with each other. This affects the theme again showing how they are divided and on two different families and are discouraged. These visual devices reinforce that Romeo and Juliet are divided and the impetuosity of young love for the themes of the film.

### **Through Another Lens: 7th Grade Visual Literacy Unit Shot Analysis Rubric**

VISUAL LITERACY STANDAR D	Getting Started	Approaching Standard	Meeting Standard	Exceeding Standard
	<ul style="list-style-type: none"> <li>• Shows a lack of understanding of visual media devices and elements</li> <li>• Has difficulty inferring and tends to interpret literally</li> <li>• Struggles to connect with the visual media</li> <li>• Produces overly short responses which lack information</li> <li>• Uses insufficient evidence to support response</li> </ul>	<ul style="list-style-type: none"> <li>• Understands some visual media devices and elements</li> <li>• Sometimes identifies theme, purpose and style</li> <li>• Infers inconsistently</li> <li>• Connects on a superficial level with the visual media</li> <li>• Generates responses to synthesize information</li> <li>• Sometimes supports responses using evidence from the visual media</li> </ul>	<ul style="list-style-type: none"> <li>• Understands visual media devices and elements, including lighting, tone, color, POV, camera angle, foreground/background, composition and symbolism</li> <li>• Discusses theme, purpose and style</li> <li>• Infers for deeper meaning</li> <li>• Evaluates, interprets and analyses visual media critically</li> <li>• Supports responses using evidence</li> </ul>	<p>Understanding exceeds grade level expectation. Examples include:</p> <ul style="list-style-type: none"> <li>• Analyses visual media more deeply or with greater sophistication, and creativity</li> </ul>

## 6 Traits Writing Checklist

	GS	AS	MS	ES
IDEAS			✓	✓
ORGANIZATION			✓	✓
VOICE			✓	✓
WORD CHOICE			✓	✓
SENTENCE FLUENCY			✓	✓
CONVENTIONS			✓	✓



Bewear Checklist for Frame Analysis 2015

Name of person: \_\_\_\_\_ (Your color pen/pencil is: \_\_\_\_\_)  
 Peer 1: \_\_\_\_\_ (Your color pen/pencil is: \_\_\_\_\_)  
 Peer 2: \_\_\_\_\_ (Your color pen/pencil is: \_\_\_\_\_)  
 Peer 3: \_\_\_\_\_ (Your color pen/pencil is: \_\_\_\_\_)

	Yes/No	Feedback
<b>TABLE</b>		
Four devices evident?	✓	
Evidence of what viewer sees in frame?	✓	
Bullet points?	✓	
Effect (theme/mood/conflict) is stated?	✓	
<b>PARAGRAPH</b>		
Topic sentence is clear?	✓	
Title of the play correctly punctuated?	✓	
Each device is addressed in the paragraph?	✓	
Each device is related to either mood/conflict/theme?	✓	
Specifically what type of mood/conflict or them is addressed?	✓	
Transition words are used?	✓	
Conclusion is evident?	✓	
Spelling is correct?	✓	
Correct terms are used?	✓	

Reflection/Reminders:

Your signature:

*Arlo May*

